

SHIPPING



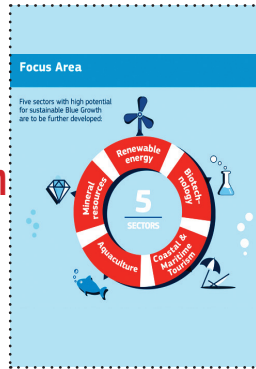
"News is what somebody somewhere wants to suppress; all the rest is advertising."
- Lord Northcliffe

Blue Economy - Wave 9



(Series on '
'Blue Economy'
By Capt. Gajanan
Karanjikar)

Capt. Gajanan Karanjikar,
Blue Economy Social Activist &
Multimodal Logistics Expert



- Actively cooperate, sharing information, knowledge, best practices, lessons learned, respective and ideas, to realise a sustainable and prosperous future for all.

Even the above characteristics restrict Blue Economy to oceans and related activities.

Chart No 2- Drivers for Blue economy

As you would see in chart above (No2) Ocean services are listed against the existing activities as in descending order of established industry status. Emerging industries are already making their way through the government corridors for requirements. Each sector broadly described as Harvesting, extraction, commerce and Ocean needs separate set of policies and enforcement mechanism in place for sustainability. That is key. For e.g. for harvesting industry which is for the aquatic harvesting of Fisheries and plant, the sustainability lies in avoiding overexploitations and planning of conservation and complete rejuvenation of the species harvested. Whilst extraction industry relates to non-replenishable industries like deep-sea mining and fossil fuel, the commerce industry concerns transport, trade, tourism and recreation. Since established industries have already exploited the environment so measures will have to be drawn on the restoration practices of such exploited sectors.

Chart No 2- Drivers for Blue economy

Type of activity	Ocean service	Established industries	Emerging industries	New industries	Drivers of future growth
Harvesting of living resources	Seafood Marine bio-technology	Fisheries	Sustainable fisheries Aquaculture Pharmaceuticals, chemicals	Multispecies aquaculture	Food security Demand for protein R&D in healthcare and industry
Extraction of non-living resource, generation of new resources	Minerals Energy Fresh Water	Seabed mining Oil and gas	Deep seabed mining Renewables Desalination		Demand for minerals Demand for alternative energy sources
Commerce and trade in and around the ocean	Transport and trade Tourism and recreation	Shipping Port infrastructure and services Tourism Coastal development	Eco-tourism		Growth in seaborne trade International regulations Growth of global tourism Coastal urbanization Domestic regulations
Response to ocean health challenges	Ocean monitoring and surveillance Carbon sequestration Coastal protection Waste disposal		Technology and R&D Blue carbon (i.e. coastal vegetated habitats) Habitat protection, restoration	Assimilation of nutrients solid waste	R & D in ocean technologies Growth in coastal and Ocean protection and conservation activities

(To be continued...)

Electro Technical Officers' Course (ETO)

(Approved by Directorate General of Shipping, Govt. of India.)

ADMISSION OPEN
AUG : 2019 BATCH



Discover the attractive and challenging career in shipping

Fully Residential**The Course**

This training programme prepares Electrical / Electronics Engineers to be employed in Merchant Naval Ships. The course is designed with practical demonstrations by Simulators, Audio Visual aids and valuable hands-on training.

Eligibility

- Maximum Age Limit - 35 years.
- A Pass in Senior Secondary Examination / +2 / or equivalent with
 - * Minimum 60% aggregate in Physics, Chemistry and Mathematics from any Government recognized board and
 - * Minimum 50% marks in English either in class X or class XII.
- A Pass in three years Diploma with 60% marks / four years Degree with 50% marks in any one of the following:
 - * Electrical and Electronics Engineering
 - * Electronics and Telecommunication / Communication Engineering
 - * Electronics and Instrumentation or equivalent
 - * Diploma / Degree courses must have been completed in an institution recognized by any State or Central Government or by AICTE

The curriculum includes

- * 5 basic STCW courses
- * The Institute will also assist to obtain INDoS & Continuous Discharge Certificate (CDC)

Duration

4 Months

Frequency

2 Batches every year February & August

Admission ProcedurePlease visit our website www.rlins.edu.in

Contact : 98940 07317 / 73391 32159 / 94890 07317

**R.L. INSTITUTE OF NAUTICAL SCIENCES**

T.V.R. NAGAR, Aruppukottai Road, Madurai - 625 022

Phone : 0452 - 391 8615 / 3918614 Fax : 0452 - 391 8618

(An ISO 9001:2015 Organisation)