

Guiding Spirit to Shipping Industry

Sagar Sandesh

Maritime Tabloid English Weekly Thrice E - Paper

In association with R L Institute of Nautical Sciences, Madurai, Tamil Nadu. | RNI No. TNENG/2012/41759 | Wednesday, September 28, 2022 | Voyage 11 Wave 98

Published & Released on Every Monday, Wednesday and Friday

**PAGE - 3**

MSC adds Port of Jeddah to Himalaya Express Service

**PAGE - 5**

New initiative explores low-carbon options
.....

**PAGE - 9**

It Still Takes More Than 11 Days To Release Goods

**PAGE - 12**

New Foreign Trade Policy to chart vision statement



Logistics tech platform Intugine integrates with ULIP for improved multimodal visibility across road, rail, ocean, and air

- PM launched the National Logistics Policy on September 17 along with the ULIP initiative
- ULIP converges and integrates 24 systems, 78 APIs, and 1454 fields across ports, shipping, waterways, railways, aviation, road transport and highways, customs and DGFT
- The announcement comes after

a successful pilot run by the Govt.

- Intugine becomes one of the early companies to integrate with ULIP enabling them to provide multimodal visibility

to their customers in a single dashboard

- The company can now provide data on goods from source to destination as it achieves complete integration with

FASTag, Sarathi and Vahan, FOIS, Port Community Systems, air cargo visibility through ACMES, ACCS, and AAICLAS

Turn to page -2 >>



Demonstrating Intugine Multi Modal

Eastaway



EASTAWAY (INDIA) PRIVATE LIMITED

License No.: RPSL-MUM-162104 Issued on 24-05-2022 Valid upto 24-05-2027



World's largest independent container feeder carrier, Operating a fleet of more than 100 vessels with an additional new build programme of 29 container vessels which includes Eight Dual Fuel and Eleven 7000 TEUs.

Embark on a journey with "EASTAWAY" & Seek desired career path and be Successful

MANNING OFFICE NOW IN INDIA
Career Opportunities for Indian Seafarers

Require For Shore in Mumbai

1. Marine Superintendent 2. Tech Superintendent

Send your CV to : recruitment.indoffice@eastaway.com

(All Ranks : Officers & Ratings)

Mail your CV to : seajobs@eastaway.com

Registered Office:

C-421/422, 4th Floor, 215 Atrium, Andheri Kurla Road, Andheri East, Mumbai – 400 069.

Website: www.eastaway.com Contact No: +91 86579 17013 / 99200 75887

Capt. Kaushik Bhatnagar

Head of Crew Manning

Capt. Maulik Hathi

Global Training Manager

Logistics tech platform **Intugine** integrates with **ULIP**..... From page -1

Under the PM Gati Shakti National Master Plan (PMGS-NMP), the Unified Logistics Interface Platform (ULIP), a part of the National Logistics Policy (NLP), sets the roadmap for developing a more interconnected and tech-driven framework for reducing costs and improving operational efficiency in the Indian logistics sector. The initiative is hailed as a game changer for the industry as logistics costs are currently at 13 – 14% of GDP in India. A brainchild of the NITI Aayog, the National Industrial Corridor Development Corporation Limited (NICDC) has taken charge of developing this platform by bringing all the milestones under ULIP, to help the logistics sector grow exponentially.

PM Narendra Modi,

on September 17th, launched the National Logistics Policy in the national capital New Delhi. Intugine was one of the few companies to be invited and selected by the Prime Minister's Office to demonstrate their solutions to the Hon'ble PM. **Mrinal Rai, Co-founder, and COO, Intugine** gave the demo to PM Modi showcasing the disruptive capabilities of the platform and its abilities to provide real-time visibility of a shipment from source to destination.

Multimodal platform company **Intugine** has emerged as one of the early companies to integrate with the ULIP initiative to realise its true potential. The company has successfully integrated with the IT systems of various union ministries, state

departments, governing bodies, and private service providers. **Intugine** now has an improved real-time multimodal visibility solution, with access to data from systems such as **FASTag, FOIS, PCS and ACMES, giving their clients a single-screen view of all their shipments across modalities.**

Intugine can fetch FASTag data from more than 800 tolls across the country for toll-based visibility of 90+ lacs commercial vehicles on the road while deriving actionable insights such as transporter scorecard, reliability score, and transporter/lane analytics. Over and above, vehicle and driver verification that took around 2 hours before have now become easy with Intugine's access to Vahan and Sarathi

data. With all this data, companies can automate their audit processes, avoid unnecessary halts and delays caused by negligence in verifying details, and comply with transportation mandates in India.

Harshit Srivastava, Co-founder, and CEO, Intugine, says, "Logistics has gained significant prominence in the last few years, with many new initiatives taken to enhance the logistics scenario of India. The future of supply chain visibility is tech-enabled, and there are many proactive schemes, such as **ULIP**, to help ambitious startups like **Intugine** bring transparency to global logistics operations. For instance, with toll infrastructure digitisation in the country or the ability to leverage the national

railway API to gain greater visibility of rake shipments, we can give our customers a single-screen view of all their shipments in transit. This increases overall process efficiency, makes ETA predictions more seamless, drives down logistics costs, and helps our clients with a unified document reference to abide by transport regulations. We are ecstatic to fulfill the government's aspiration to have an integrated view of the Indian logistics value chain by empowering the ecosystem with our improved multimodal visibility solution."

As part of ULIP integration, **Intugine** is also synced with the Freight Operations Information System (FOIS),

Turn to page -3



ATPI MARINE & ENERGY

ATPI Marine & Energy is an international leader in providing travel to the energy and shipping sectors. Offering solutions tailored to offshore organisations, alongside 24/7 expertise and innovative technology, ATPI Marine & Energy operates with cost, efficiency and safety at the forefront of every travel strategy.

Delivering what really matters™

www.atpi.com



Logistics tech platform Intugine integrates with ULIP..... From page -2

which equips their customer with milestone visibility of 9000+ freight trains while capturing real-time arrival and dispatch times of these trains in one of the largest rail networks in the world. The integration now enables tracking of 1400 million metric ton goods worth Rs 1.43 lakhs crore per year while reducing demurrages and wharfages and increasing the planning and execution efficiency of their rake movement.

Moreover, their Port Community System integrations offer one of the most advanced ways of electronic exchange of information

between the logistics sectors and 13 major ports and 200+ smaller and intermediate ports in India. **Intugine** can now deliver customs data for import/export, port-in and port-out time of the container, and berthing date and time of 143 million tons of goods annually to its customers. This leads to a reduction in detention and demurrage charges and increases the overall visibility of port operations.

Furthermore, Intugine can now provide its clients with customs data of their air cargo through integrations with ACMES, ACCS, and AAICLAS systems,

covering 20 major airports in the country.

Commenting on the benefits of seamless integration across the logistics value chain, **Amit Tyagi, Deputy General Manager, Gold Plus Glass Industry**, says, "By tracking goods from their source to destination using a combination of modalities, Intugine has played a pivotal role in giving us multimodal and intermodal visibility of our assets on a single platform. This aids us in building resilience *within our supply chain operations and empowers us to cater to timely deliveries.*"

About Intugine

Founded in 2017, Intugine is a Real-time Multimodal Supply Chain Visibility Provider. Intugine leverages its IoT technology expertise to help businesses optimise & digitise their supply chain & logistics operations. Over the last few years, Intugine has established itself as one of India's leading logistics SaaS companies. Today Intugine works with 75+ global enterprise names like Signify, Flipkart, Mahindra Logistics, Titan, Diageo, Ultratech, and Kuehne Nagel. Visit our website: www.intugine.com

MSC adds Port of Jeddah to Himalaya Express Service

NEW DELHI
Sagar Sandesh News Service

In response to market demand, and reflecting MSC's longstanding commitment to serving the Saudi market, we have decided to introduce a new call at the port of Jeddah on MSC's Himalaya Express service, says a recent statement from MSC.

Cargo from worldwide locations for import to Jeddah may be carried on MSC's global network of 260+ trade routes and transshipped at the main hubs of NWC Europe, as well as GioiaTauro and King Abdullah Port.

Export cargo from Jeddah may be transshipped via King Abdullah Port, Valencia

and NWC Europe hubs in order to reach destinations.

The first vessel sailing from Europe to Jeddah will be **MSC GAIA** on voyage **IS241R**, scheduled to depart Felixstowe on 8 October and arrive Jeddah on 26 October.

The first ship sailing from India to Jeddah will be **MSC IRENE** on



MSC Himalaya Express Service added with Port of Jeddah

voyage **IS241A**, scheduled to depart Colombo on 9 October and arrive Jeddah on 23 October.



Sagar Sandesh

Guiding Spirit to Shipping Industry Maritime Tabloid English Weekly Thrice E-Paper

Mumbai Office

217, Secands Road, Unique Industrial Estate, off Veer Savarkar Marg,
Bombay Dyeing Compound, Prabhadevi, Mumbai - 400025
Ph: 022 - 24211583 / 24210193. Fax: 022 - 2421 2149

Chennai Office

No.6, Nungambakkam First Lane (Opp. Regional Office, Indian Oil Corporation), Nungambakkam High Road, Chennai - 600 034
Ph: 044-42664408

Admin. Office

21 "LAKSHMI", Sathya Sai Nagar, Madurai-625 003. Ph : 0452 437 8300 / +91 72000 84864

EDITOR & PUBLISHER : **Dr R Lakshmi**pathy
EXECUTIVE EDITOR : **Dr G.R. Balakrishnan**, M.A Phd.,

ADVISORY EDITORIAL BOARD

Mr. Ashok C. Advani,
Chief Engineer - Advisor (Mumbai) RLINS, Ex General Manager - Pacific International Lines.

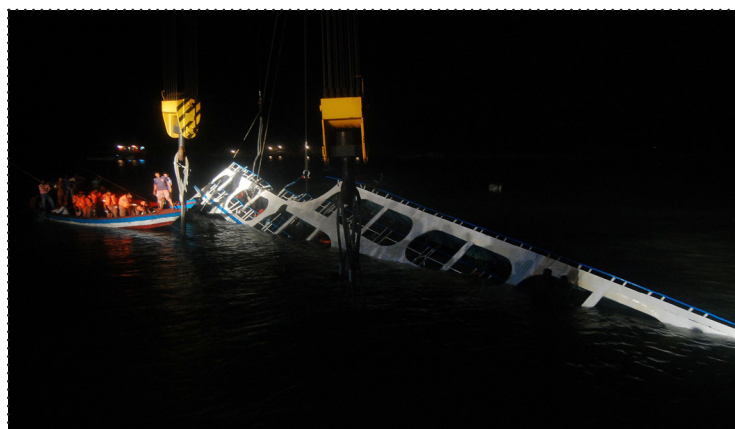
Capt. S.S. Jairam,
Master Mariner, Ex Director- Seearland Management services Pvt Ltd. Ex Chairman - MASSA.

Captain S.M. Halbe,
Chief Executive Officer - MASSA; Fellow of Nautical Institute, London and CMMI, Ex MD- GEM.

Mr. Y. Nath, PFI.Mar.E., F.I.E.,
Chartered Engineer, President, Planmain Quality Consultants (India) Pvt. Ltd.

SAGAR SANDESH - Maritime Tabloid English Weekly Thrice E-Paper
Published by Dr R Lakshmipathy (Owner) on behalf of Professional Publications (P) Ltd, "Sriram", 27, Sathyasai Nagar, Madurai - 625 003.
Published at "Lakshmi", 21, Sathyasai Nagar, Madurai - 625 003, Tamilnadu.
RNI No. TNENG/2012/41759.

At least 25 perish in a ferry mishap in Bangladesh



B'desh ferry accident, kills 25 people

DHAKA
Sagar Sandesh News Service

At least 25 people were killed and dozens were missing after a boat packed with Hindu devotees sank on September 25th in Bangladesh, in the worst

waterways disaster to hit the country in more than a year.

The bodies recovered so far included 12 women and eight children, local officials were quoted by media reports.

"The rescue operation for

those missing is ongoing," he said, adding the ferry was taking mostly devotees to a Hindu temple on the occasion of Mahalaya.

Officials said they he did not know the exact number of people missing, but sources said more than 70 people had been on the boat, which sank in the Karatoya river.

Police said nearly 20 people were still missing while some of the passengers managed to swim ashore or were rescued.

Hundreds of people die each year in ferry accidents in Bangladesh, a low-lying country that has extensive inland waterways and lax safety standards.